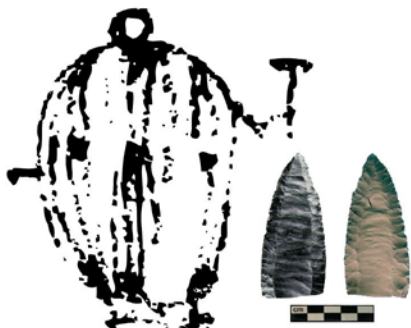


## ARCHAEOLOGY 321

### *Mammoths to Maize, Medicine Wheels and Warriors: Archaeology of the Canadian Plains*

Fall 2019



*An Introduction to Canadian Plains Archaeology.* Processes of cultural and social change over the last 12,000 years from early hunters of Ice–Age megafauna to tribal level farming societies are explored from the perspective of the Canadian Plains.

**Instructor:** Gerald (Gerry) A. Oetelaar

**Office:** ES 862

**Phone:** 403-220-7629

**Email:** oetelaar@ucalgary.ca

**Office Hours:** MTWRF 10:00 – 11:00 or by appointment

**Lectures:** MWF 11:00–11:50

**Room:** ICT 114

### Course objectives

The Great Plains is an area defined by the Rocky Mountains on the west and the tall grass prairie on the east, and from the boreal forest on the north to the Edwards Plateau of Texas on the south. The course surveys the historical and cultural development of aboriginal peoples occupying the Great Plains of North America from the arrival of the first humans through the European settlement period with a particular emphasis on the northwestern Plains and the Upper Missouri. Initial lectures and discussions briefly describe the physical setting and general theoretical approaches to the study of hunter/gatherer and horticulturalist societies. We then explore the initial colonization of the Americas and the subsequent development of hunting strategies for herd animals occupying the grassland environment. Thereafter, we examine human adaptations to changing environments and the development of social strategies to cope with natural hazards and demographic pressures. With time, these local developments lead to the establishment of ties with human groups in adjoining homelands including the eventual encounters with new migrants from distant lands.

### Learning outcomes

At the end of this course, students will be expected to:

- 1) Explain the lifeways of the Plains bison hunters and their neighbours.
- 2) Describe the cultural developments on the Canadian Plains.
- 3) Give examples of how archaeologists use these cultural materials to reconstruct the life ways of these groups.
- 4) Apply the principles of archaeological research in the interpretation of adaptations to the changing natural and cultural settings.

### **Texts**

There is no required text for this course although students will be directed to supplementary readings on particular topics. Students are responsible for the material presented in the lectures.

### **Evaluation methods**

This class is evaluated through a map quiz, two midterm examinations, and a scheduled final exam. Exam formats will vary, and may consist of some combination of matching concepts in columns, multiple choice, definitions, and/or short answer. There will be one map quiz, two midterm exams and a final exam. All exams are closed book exams. Students need not pass all components of the course to receive a passing grade for this class.

### **Examination schedule**

Map Quiz (September 25)	10%
Mid-term 1 (October 18)	25%
Mid-term 2 (November 8)	30%
Final (Scheduled)	35%

### **Deferred exams**

You must provide advance notice to the instructor if you are unable to take an exam. Deferred exams may be allowed in the following circumstances: illness, domestic affliction, or religious conviction. Travel arrangements and misreading of the syllabus are not valid reasons for requesting a deferred exam. If you have missed an exam for a legitimate reason, you will be able to write a “make up” exam as close to the original date as possible. The date and location will be at the convenience of the department, instructor or teaching assistant. Students need not obtain a passing grade in each component of the course to receive a passing grade.

### **Grading scale**

A+ - 95-100%; Outstanding achievement

A - 90–95%; Excellent–superior performance, showing comprehensive understanding of subject matter.

A- - 85–90%

B+ - 80–85%

B - 75–80%; Good–clearly above average performance with knowledge of subject matter generally complete.

B- - 70–75%

C+ - 65–70%

C - 60–65%; Satisfactory–basic understanding of subject matter.

C- - 55–60%

D+ - 50–55%

D - 45–50%; Minimal pass–marginal performance.

F - <45%; Fail–unsatisfactory performance or failure to meet course requirements.

### **Academic misconduct and its consequences**

The University expects Students to conduct Academic Activities with integrity and intellectual honesty and to recognize the importance of pursuing and transmitting knowledge ethically.

“Academic Misconduct” includes such things as Cheating, Falsification; Plagiarism, Unauthorized Assistance and failure to comply with exam regulations or an Instructor’s

expectations regarding conduct required of Students completing academic assessments. Academic Misconduct is a serious form of intellectual dishonesty with significant consequences. Students who participate in, or encourage the commission of, Academic Misconduct will be subject to disciplinary action which could include Probation, Suspension, or Expulsion from the University. For more information see the Student Academic Misconduct Policy (<https://www.ucalgary.ca/policies/files/policies/student-academic-misconduct-policy.pdf>)

### **Information on instructor intellectual property**

Lectures, demonstrations, performances, and any other course material provided by an instructor includes copyright protected works under the Copyright Act and all forms of electronic or mechanical recording of lectures, laboratories, tutorials, presentations, performances, electronic (computer) information, the duplication of course material, and to the translation of recordings or transcriptions of any of these materials to another form by electronic or mechanical means by students is not permitted, except.

- As a formal accommodation as assessed by the Student Accessibility Services and only for individual private study and only at the discretion of the instructor.
- With the permission of the instructor, students without a formal accommodation may audio record lectures, provided that the student and instructor sign a release form available from departmental and faculty offices. A copy of the Release form shall be retained by the instructor and by the department in which the course is offered. Any audio recording by students is permitted only for the purposes of private study by the individual student. Students may not distribute, email or otherwise communicate these materials to any other person.
- For any other use, whether by duplication, transcription, publication, sale or transfer of recordings, written approval must be obtained from the instructor for the specific use proposed.
- Any use other than that described above (e.g. distributing, emailing or otherwise communicating these materials to any other person, constitutes academic misconduct and may result in suspension or expulsion.
- Students are encouraged to make notes of classroom discussions, lectures, demonstrations etc.
- See Section E. below

### **Freedom of Information and Protection of Privacy Act**

The University of Calgary is committed to protecting the privacy of individuals who work and study at the University or who otherwise interact with the University in accordance with the standards set out in the Freedom of Information and Protection of Privacy Act. The Department of Anthropology and Archaeology keeps exams and any term work not picked up for a minimum of one year after which it is destroyed. Please refer to the following link for detailed information: <http://www.ucalgary.ca/legalservices/foip>

### **Academic Accommodations**

Note: It is the student's responsibility to request academic accommodations according to the University policies ([ucalgary.ca/access/accommodations/policy](http://ucalgary.ca/access/accommodations/policy)). Students requesting an Accommodation on the basis of Disability are required to register with Student Accommodation Services (SAS) by submitting a Request for Accommodation in accordance with the Procedure for Accommodations for Students with Disabilities

<https://www.ucalgary.ca/policies/files/policies/procedure-for-accommodations-for-students-with-disabilities.pdf>). SAS will issue a Letter of Accommodation which must be presented to either designated contact person within the Department or the appropriate Instructors within 10 days of the beginning of term. Students needing an Accommodation in relation to their coursework or to fulfil requirements for a graduate degree, based on a Protected Ground other than Disability, should communicate this need, preferably in writing, to their Instructor or the Department Head/Dean or to the designated contact person in their Faculty.

### **Copyright Legislation**

All students are required to read the University of Calgary policy on Acceptable Use of Material Protected by Copyright ([www.ucalgary.ca/policies/files/policies/acceptable-use-of-material-protected-by-copyright.pdf](http://www.ucalgary.ca/policies/files/policies/acceptable-use-of-material-protected-by-copyright.pdf)) and requirements of the copyright act (<https://laws-lois.justice.gc.ca/eng/acts/C-42/index.html>) to ensure they are aware of the consequences of unauthorized sharing of course materials (including instructor notes, electronic versions of textbooks etc.). Students who use material protected by copyright in violation of this policy may be disciplined under the Non-Academic Misconduct Policy.

### **Support and Resources**

A link to required information that is not course-specific related information found on the Office of the Registrar's website: <https://www.ucalgary.ca/registrar/registration/course-outlines>.