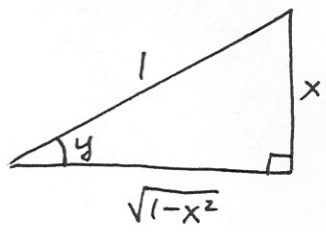


# Worksheet # 5 - figures.

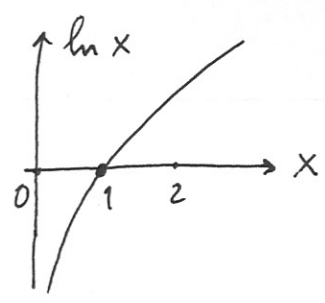
1g



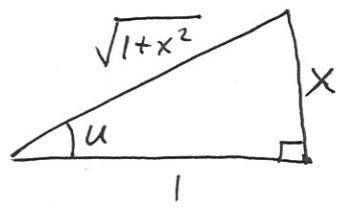
$$\sin y = x$$

$$\tan y = \frac{x}{\sqrt{1-x^2}}$$

3a



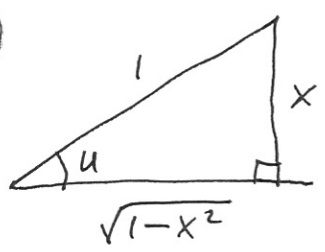
2c



$$\tan u = x$$

$$\cos u = \frac{1}{\sqrt{1+x^2}}$$

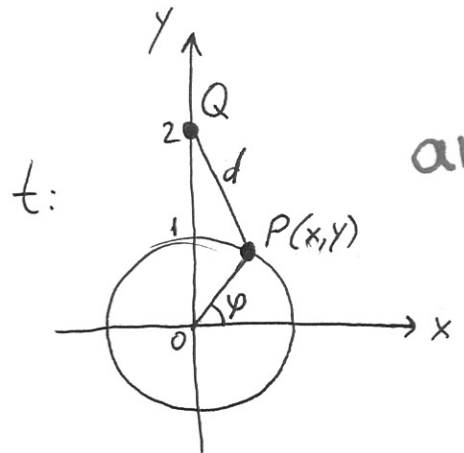
2d



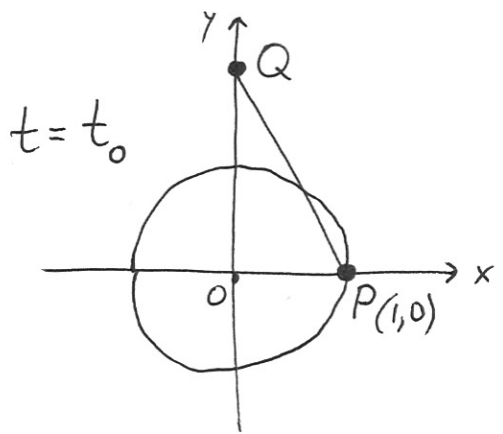
$$\sin u = x$$

$$\cos u = \sqrt{1-x^2}$$

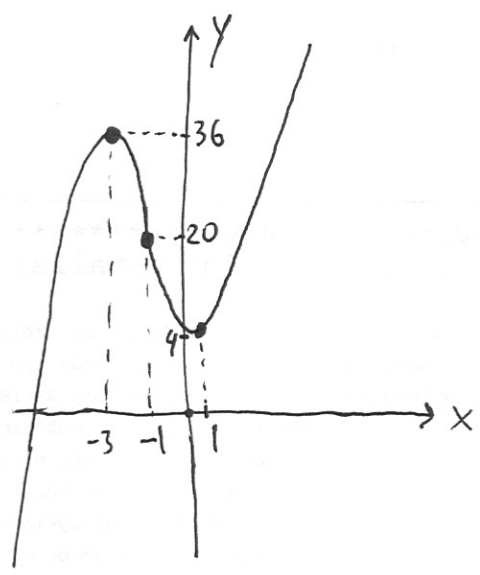
4



and

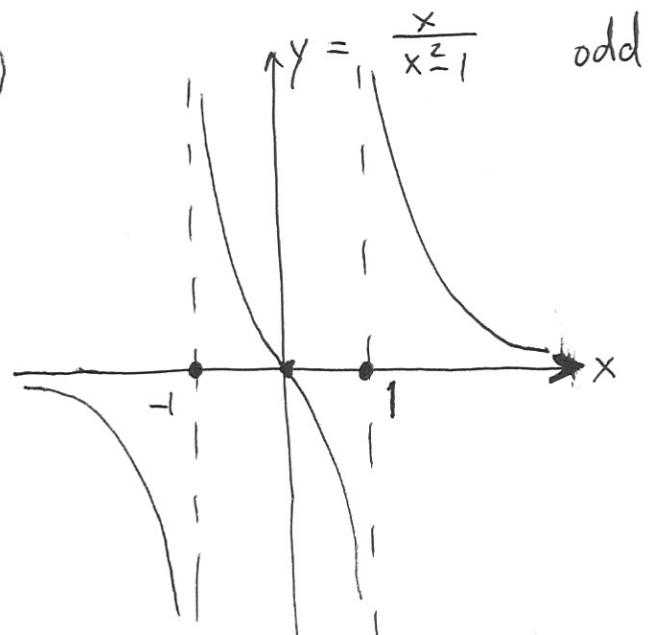


5



symmetric in  $(-1, 20)$

6a



symmetric in  $(0, 0)$